

Cattani Smart Suction User Maintenance Guide

<p>PLEASE TAKE NOTE:</p> <p>It is very important that whilst cleaning filters and disinfecting the suction system, at no time should any detergents or house hold products come into contact with any components.</p> <p>Only use products recommended for use by the manufacturer. Use of other products may cause damage to the equipment or effect its performance.</p> <p>Always ensure you are familiar with safety warning labels, product instructions and safety data sheets before performing any processes or procedures.</p> <p>Before carrying out any maintenance on this system, ensure all appropriate Personal Protective Equipment (PPE) such as: gloves, mask, full sleeve gown and eye protection are worn.</p>	<p>Weekly Maintenance:</p> <p>FILTER/SOLIDS COLLECTOR ON CATTANI SUCTION UNIT</p> <ul style="list-style-type: none"> • This process should be completed once per week at the end of te working day, after the disinfection process. • Turn the power off to the suction system - either at the main switch or at the power point. • To remove the filter from its housing, twist anti-clockwise and pull. It is recommended that you collect the waste material from the filter as it contains amalgam. • This can be done by tapping the filter and allowing waste material to fall into an appropriate container and safely stored for later collection by an approved recycling company. • Brush and rinse filter with clean water to shift any stubborn matter from the filter. Ensure the brush has not been used with any other chemical or detergent. • DO NOT use any detergent or disinfectant to clean the filter - simply empty it and rinse with water. 	<ul style="list-style-type: none"> • Wipe the outside of the filter basket and the inside of the filter housing, especially around the rubber o-ring seal, to clean away any gritty material. • Apply a few drops of Lubri-Jet lubricant to the rubber o-ring, work it around the entire o-ring and then reinstall the filter into its housing. • After the filter is reinstalled, check that the o-ring seal is seated properly and not bulging out in any place as this may cause a fluid leak. If the o-ring is bulging, swollen or shows signs of wear, contact your equipment service technician for replacment. • Turn the power back on to the suction system. <div style="background-color: #cccccc; padding: 10px; margin-top: 10px;"> <p>Ensure the area around the suction system is clean and clear of debris that may affect ventilation. Check the display on the keypad for any error messages or warnings and report as necessary. Check for any signs of fluid leaks or damaged hoses and if suspect, report to your equipment service technician.</p> </div>
---	--	---

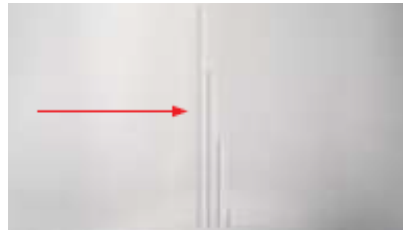
DAILY MAINTENANCE

Daily maintenance is important to reduce the amount of bacterial build up within the system; preventing blockages and unpleasant odours.

MEDI DENT®



1. Fill the Pulse Cleaner with 2.5 litres of warm water.



2. Each line on the inside of the Pulse Cleaner represents 1 litre, so fill it up to halfway between the second and third line.



3. Place the Puli-Jet Gentle on a level and steady surface.



4. Slightly unscrew the red cap (i.e. 1-2 revolutions), but do not completely unscrew it.



5. Squeeze the bottle softly to force solution into the measuring dispenser.



6. Continue to squeeze until the solution reaches the 30ml mark.



7. If too much solution has entered the dispensing chamber, it can be poured back into the main bottle by tipping the bottle towards the small tube on the side.



8. Unscrew and remove the red cap. Pour the solution from the dispensing cup into the full Pulse Cleaner. Take care to not allow more solution from the main bottle flow into the dispensing cup.



9. With a disposable cloth, wipe any drips of solution from the bottle (and then dispose of the cloth).



10. Connect suction hoses to Pulse Cleaner – adaptors may be required as hose sizes vary. Pulsed aspiration of the solution will happen automatically.

11. Once pulsing has stopped please remove hoses from the Pulse Cleaner.
***Please note a small amount of solution will remain in the bottom of the cleaner. This can be poured down the spittoon or aspirated manually.**

12. It is highly recommended to continue aspirating air for several minutes before shutting down the suction system. This ensures that the disinfectant reaches the suction unit in the plant room.

**** Puli-Jet Gentle leaves a residue on the inside of pipes and suction tubes in order to stop growths on these surfaces. This is the reason that you may sometimes find the surface of a tube to be 'oily'. This is completely normal and the product is designed to do this. Puli-Jet Gentle should never be pre-or semi diluted. It must be diluted (according to the instruction) and then used straight away. It is very important not to under-dilute the Puli-Jet as a too strong solution may damage the filter basket o-ring. Also do not use boiling water as some of the plumbing connectors are not rated to withstand high temperatures.**